

Pilliga Pottery

Kate French

4-day workshops:
25-28 August 2011

OR
8-11 September 2011

2-day workshop:
3- 4 September 2011

All aspiring and practicing visual artists will improve their powers of observation, their understanding of the human face, and of the subtle expressions which animate it. You will learn Kate's unique methods of ceramic hand building and facial modelling. These workshops are packed with logical, step by step instruction and demonstrations in a very supportive learning environment.

Option 1 - Enrol and pay a \$ 100 non-refundable deposit, with the final payment due by (or on) the Workshop date. Progressive payments are also acceptable.

Option 2 - Enrol and pay the full fee. Credit card facilities and EFTPOS are available at Pilliga Pottery.

Lunches, morning/afternoon tea - will be available at the Blue Wren Bush Café, at Pilliga Pottery

Accommodation – will be available at Pilliga Pottery, please book early to avoid disappointment.

02 6842 2239

The Sculpture Workshops at Pilliga Pottery

1 x 2 day OR 2 x 4 day Workshops with **Kate French**

Kate French The renowned sculpture artist from Tamborine Mountain, in the South East Queensland Hinterland, specialises in traditional portrait bust sculptures, in both ceramics and bronze.

Kate travels nationally and internationally to teach the "Kate French Method" of ceramic clay portrait sculpture.

"The first medium I was drawn to was clay ceramics, focusing on figurative and portrait sculpture. Over the years, the older female has become the main subject of my sculptural practice. I love to tell a story about these archetypal characters who birth themselves in my studio. These works, inevitably, are not beautiful, in the traditional sense, but all of them celebrate what it means to be human, to be alive..."



Kate French at work

See her web site :
<http://katefrench.com.au>

"...a refreshing, vigorous and challenging workshop, with a sense of fun. Kate changed the rules of conventional clay methods and added her own fresh talents to guide us to create deliciously raw characters who came alive before our eyes!!!"



My time with Kate inspired us to take a closer look at those around us and continue to sculpt now with feeling!"

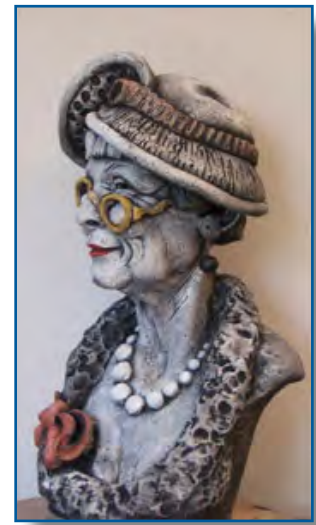
Vicki Lacey , Clayfield College

www.pilligapottery.com.au

Ring Maria at Pilliga Pottery, 02 6842 2239 or email her at pottery@tpg.

Pilliga Pottery

Sculpture Workshop
"A Portrait in Clay"
at Pilliga Pottery
with Kate French



Book now for your Sculpture Workshops
at Pilliga Pottery with **Kate French**

1 x 2 day OR 2 x 4 day Workshops:

*One 2 day workshop \$ 275
3-4 September 2011
A facial features study workshop
(individual eyes, ears, mouths, noses,
followed by a mask on the second day)*

*Two 4 day workshops each \$ 520
25-26-27-28 August, 2011
8-9-10-11 September 2011
In-depth portrait workshop*

Please Note:

Workshop fees include one firing. Clay is an additional cost.

These Workshops are limited to small classes and are for anyone who wishes to learn how to model a portrait bust in clay. It is structured for total beginners, experienced artists and sculptors alike.

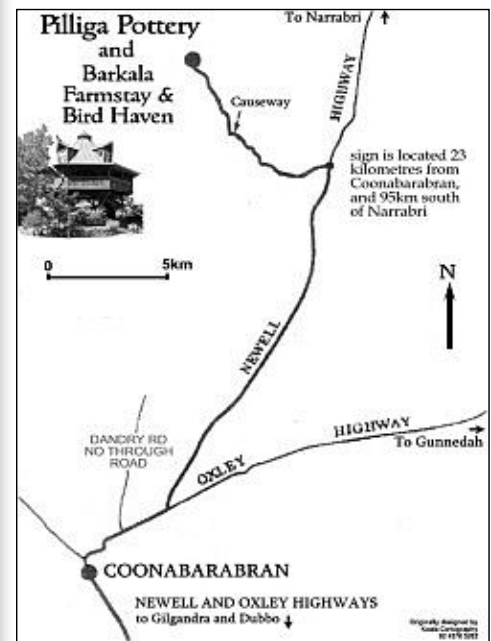
PILLIGA POTTERY

35 km north of
Coonabarabran

PO Box 197
Coonabarabran - NSW -
2357

Phone / Fax: 02 68422239

www.pilligapottery.com.au



Please : DO NOT USE
YOUR GPS UNIT. It
will direct you over an
endless maze of dirt roads.
Our old fashioned map
is the better way to find
us. We are located on a
well-maintained dirt road,
accessible for all 2 wheel
drive vehicles.